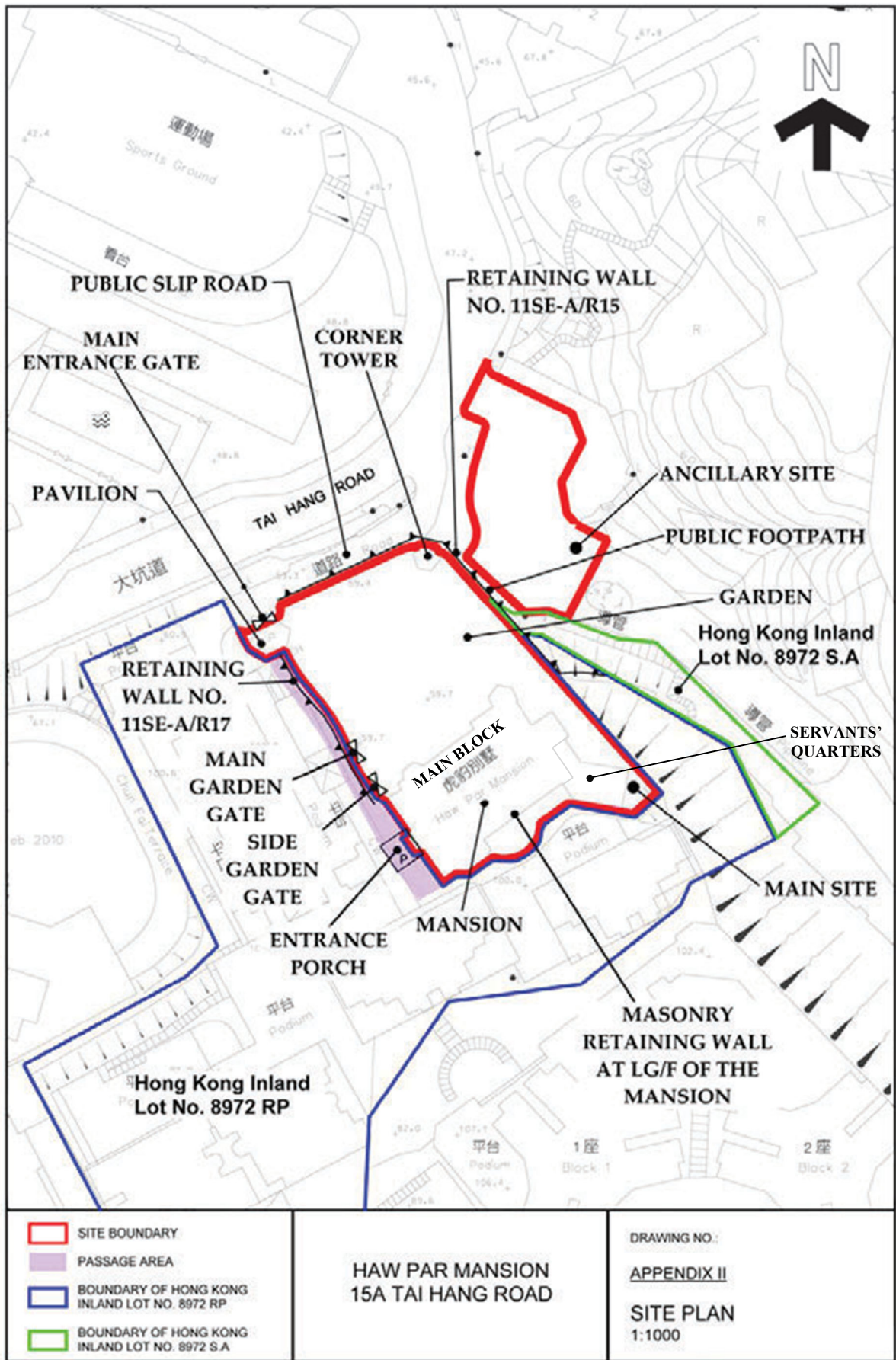
 SITE BOUNDARY
 EXTRACT PLAN BASED ON SURVEY
 SHEET No. 11-SE-11A

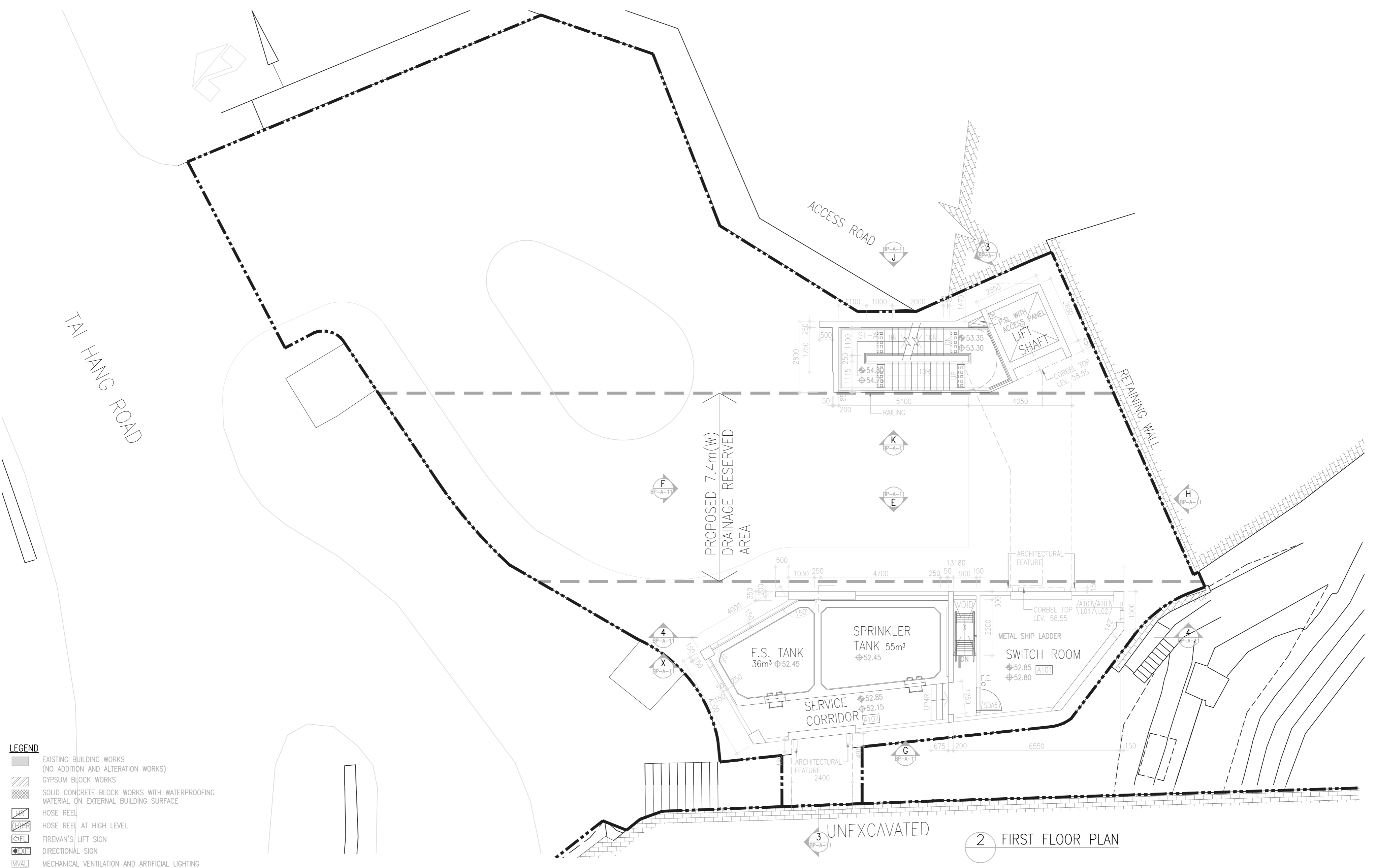
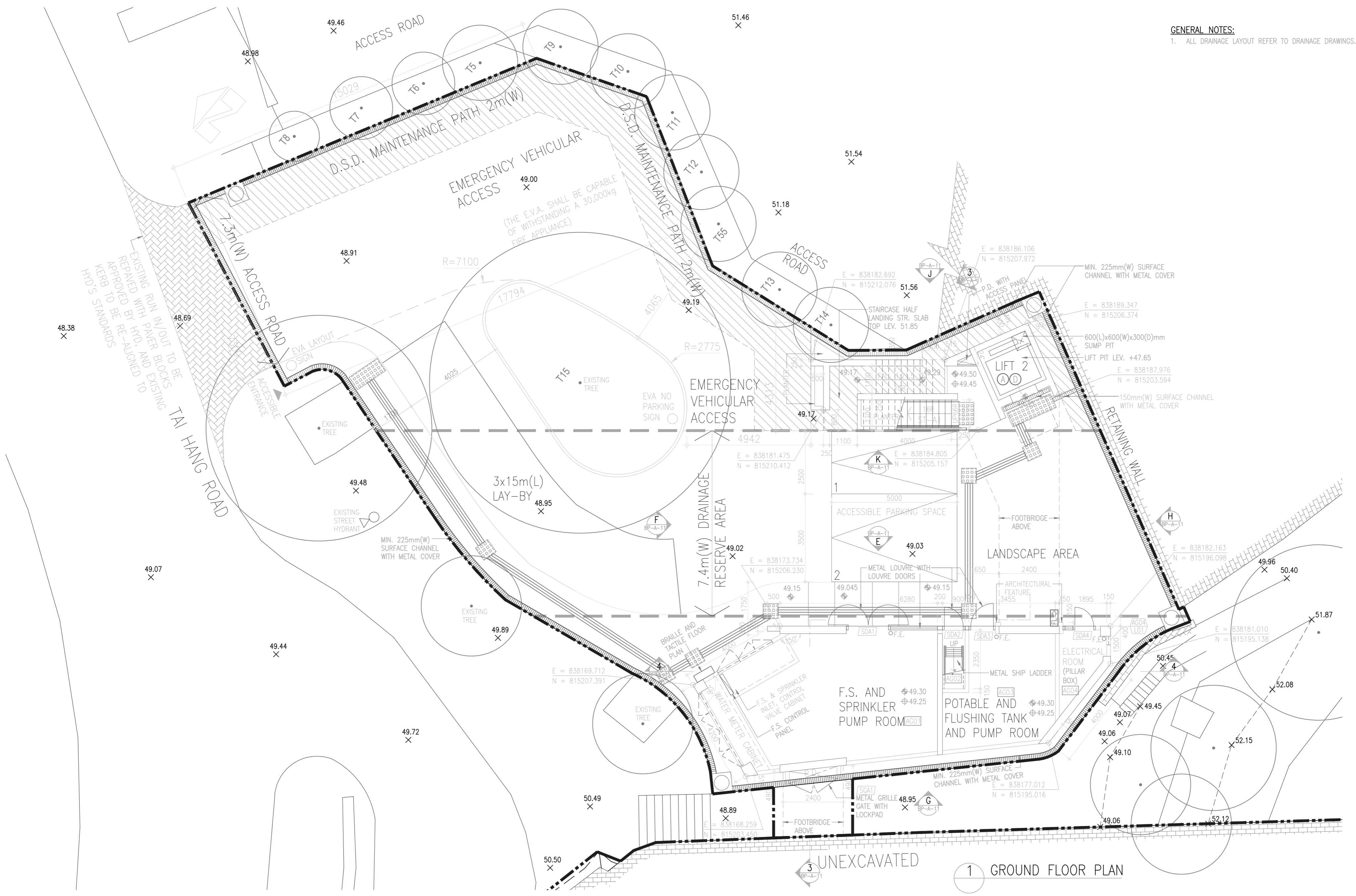
HAW PAR MANSION
 15A TAI HANG ROAD

DRAWING NO.:
 APPENDIX II
 LOCATION PLAN
 1:1000



(Second Edition)

GENERAL NOTES:
 1. ALL DRAINAGE LAYOUT REFER TO DRAINAGE DRAWINGS.



- LEGEND**
- EXISTING BUILDING WORKS (NO ADDITION AND ALTERATION WORKS)
 - GYPSUM BLOCK WORKS
 - SOLID CONCRETE BLOCK WORKS WITH WATERPROOFING MATERIAL ON EXTERNAL BUILDING SURFACE
 - HOSE REEL
 - HOSE REEL AT HIGH LEVEL
 - FIREMAN'S LIFT SIGN
 - DIRECTIONAL SIGN
 - MECHANICAL VENTILATION AND ARTIFICIAL LIGHTING
 - ARTIFICIAL LIGHTING
 - 4.5kg CO₂ FIRE EXTINGUISHER
 - 60/60 F.R.R. INSPECTION PANEL
 - ROOM NUMBER
 - DOOR MARK
 - EXISTING FIXED FURNITURE MARK
 - EXISTING DOOR, WINDOW, GRILLE TO BE RETAINED
 - ROOM NUMBER
 - L: FOR LOUVRE MARK
 - W: FOR WINDOW MARK
 - EXISTING DOOR SHALL BE KEPT OPEN
 - 0.00 0.00 EXISTING LEVEL
 - 0.00 0.00 STRUCTURAL FLOOR LEVEL
 - 0.00 0.00 FINISHED FLOOR LEVEL

FOR REFERENCE ONLY

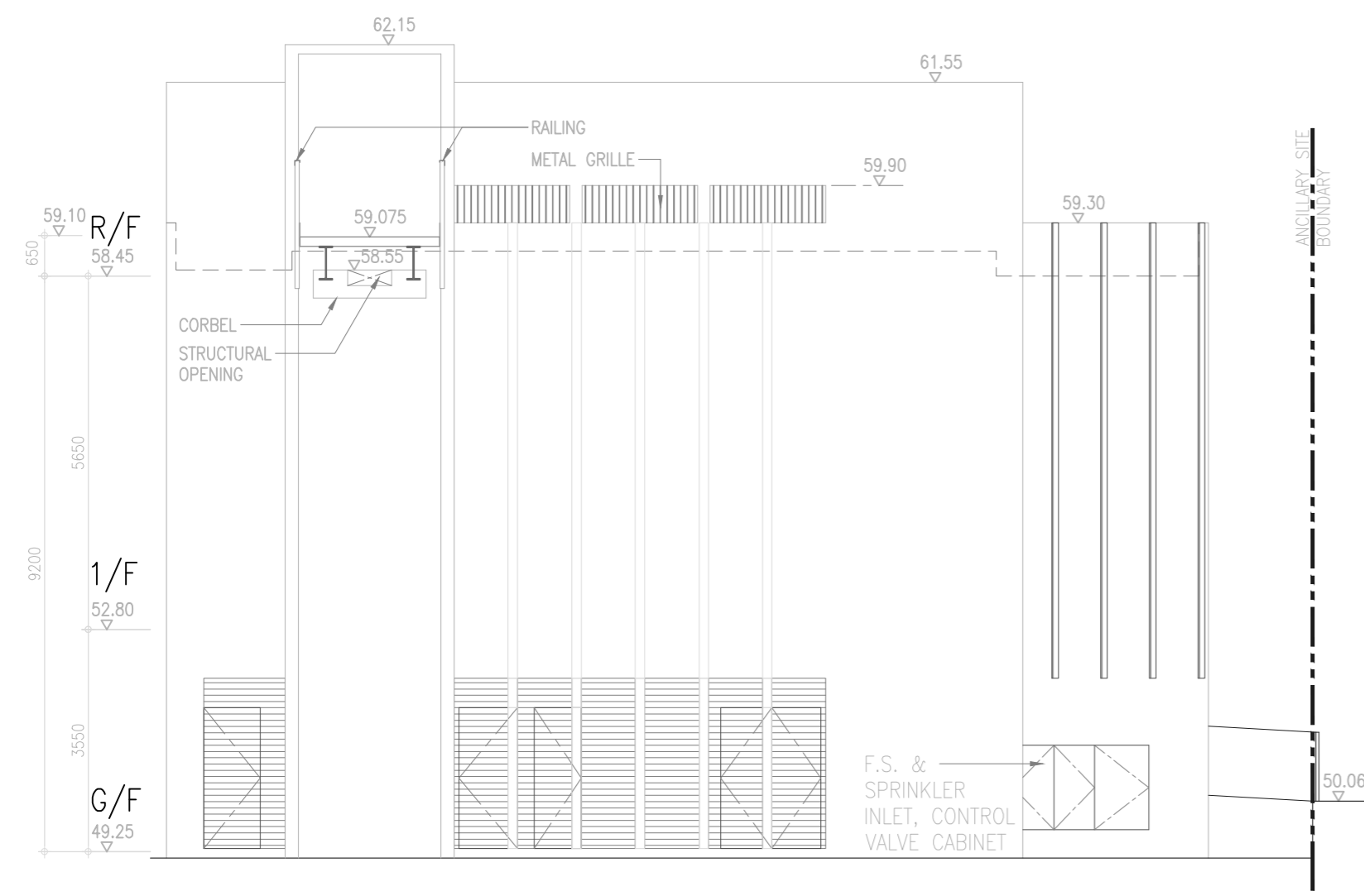


3 ROOF PLAN

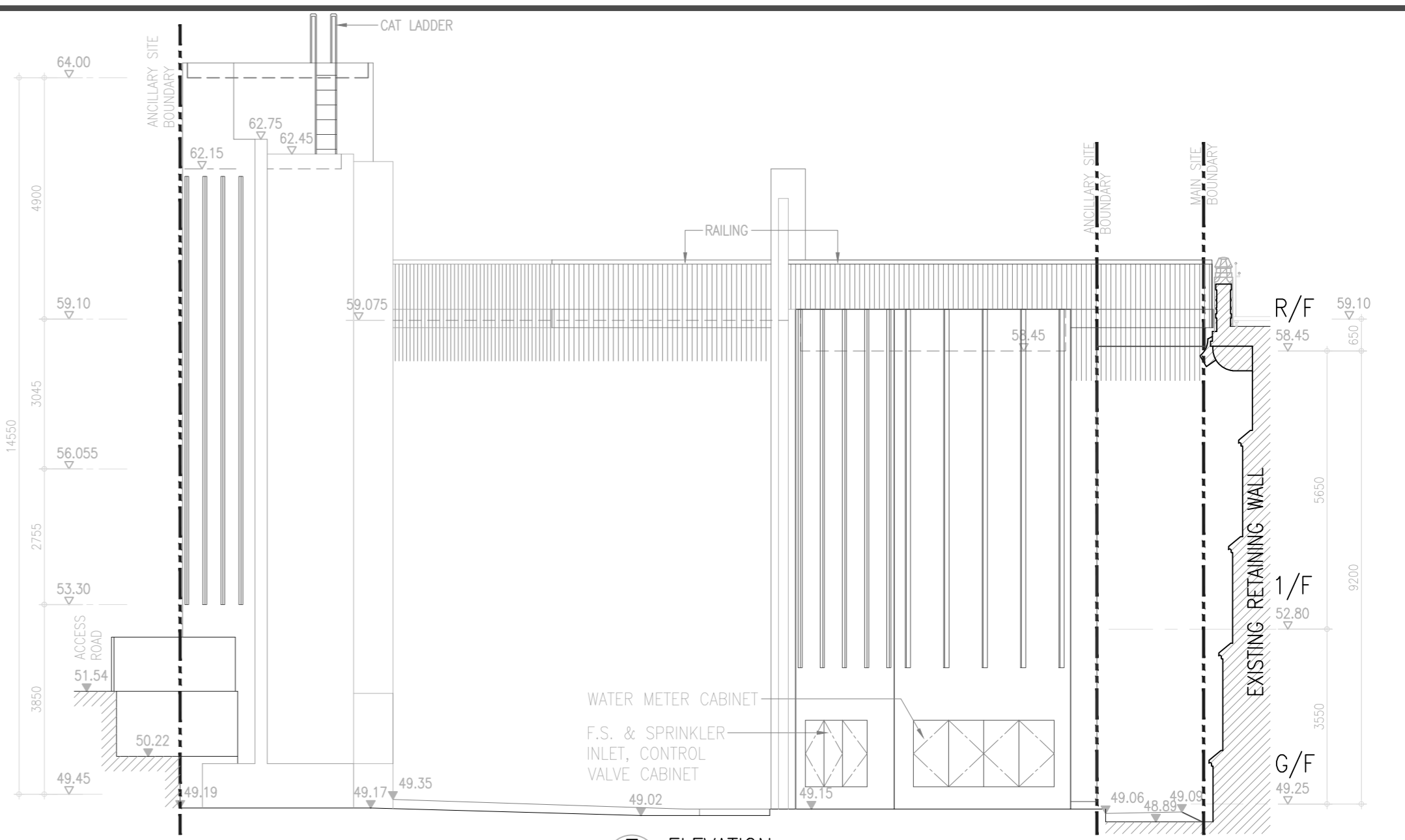
4 UPPER ROOF PLAN

- LEGEND**
- EXISTING BUILDING WORKS (NO ADDITION AND ALTERATION WORKS)
 - GYPSUM BLOCK WORKS
 - SOLID CONCRETE BLOCK WORKS WITH WATERPROOFING MATERIAL ON EXTERNAL BUILDING SURFACE
 - HOSE REEL
 - HOSE REEL AT HIGH LEVEL
 - FIREMAN'S LIFT SIGN
 - DIRECTIONAL SIGN
 - MECHANICAL VENTILATION AND ARTIFICIAL LIGHTING
 - ARTIFICIAL LIGHTING
 - 4.5kg CO₂ FIRE EXTINGUISHER
 - /60/60 F.R.R. INSPECTION PANEL
 - ROOM NUMBER
 - DOOR MARK
 - EXISTING FIXED FURNITURE MARK
 - EXISTING DOOR, WINDOW, GRILLE TO BE RETAINED
 - ROOM NUMBER
 - L: FOR LOUVRE MARK
 - W: FOR WINDOW MARK
 - EXISTING DOOR SHALL BE KEEP OPEN
 - 0.00 0.00 EXISTING LEVEL
 - 0.00 0.00 STRUCTURAL FLOOR LEVEL
 - 0.00 0.00 FINISHED FLOOR LEVEL

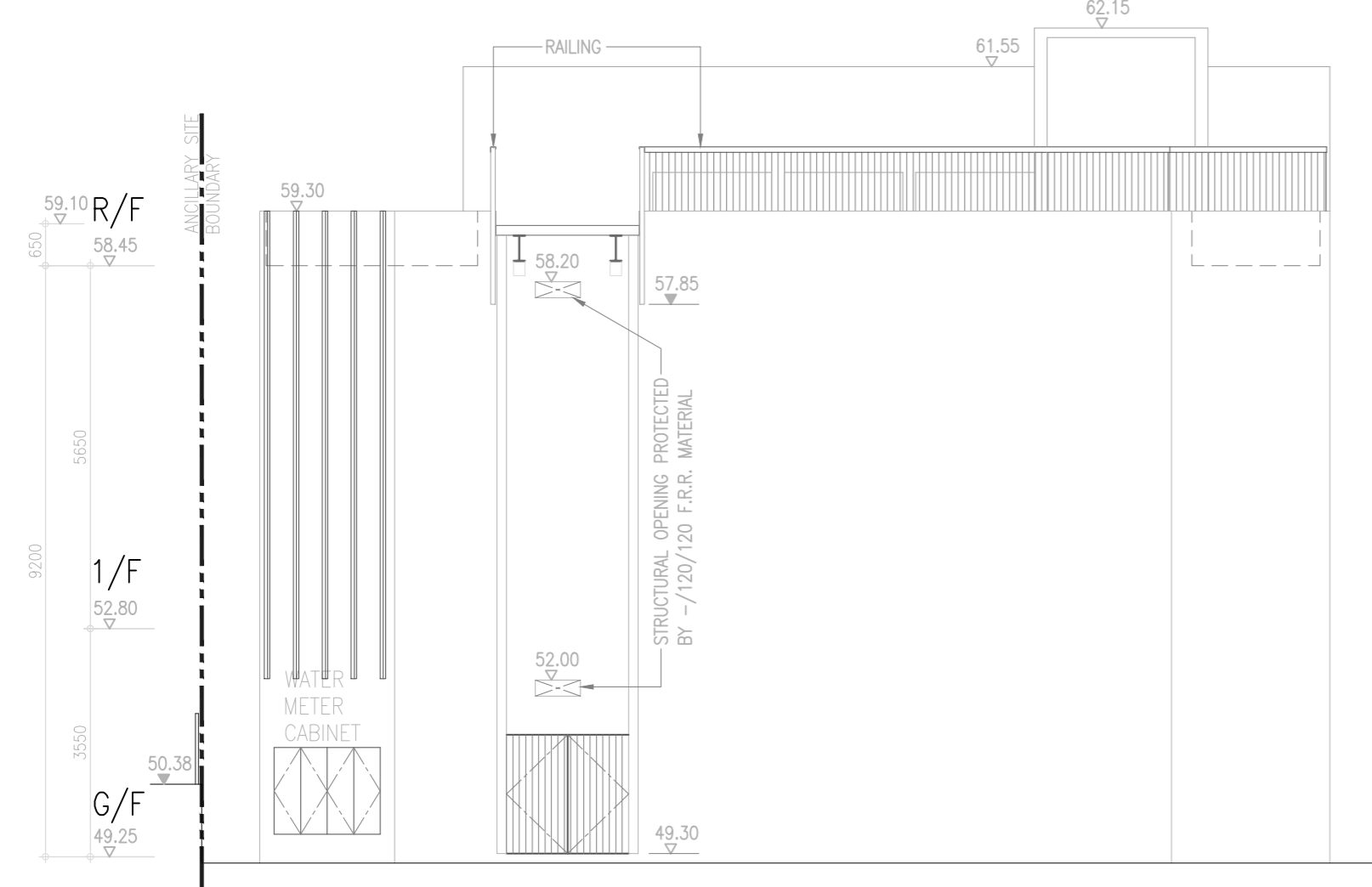
FOR REFERENCE ONLY



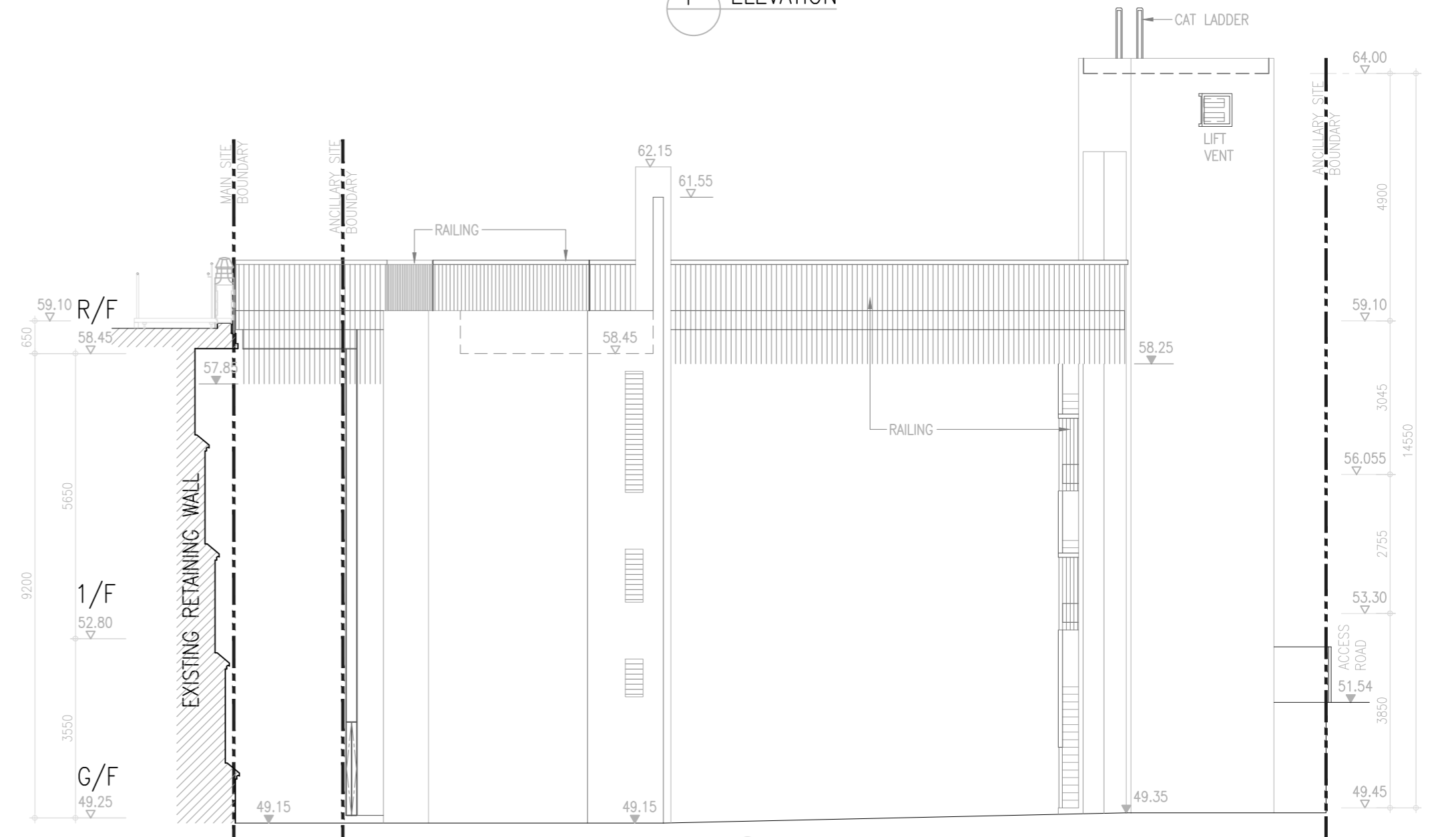
E ELEVATION



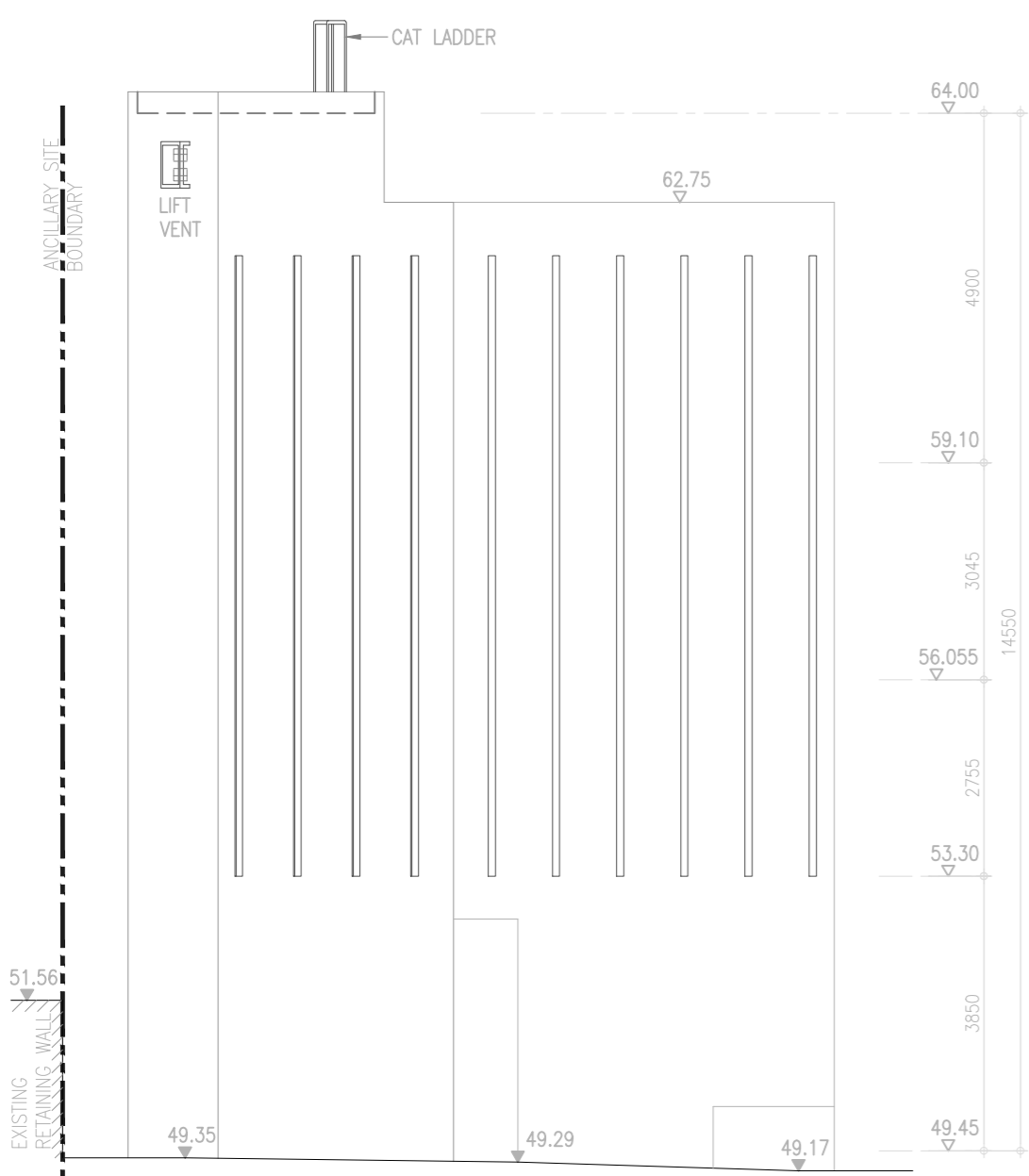
F ELEVATION



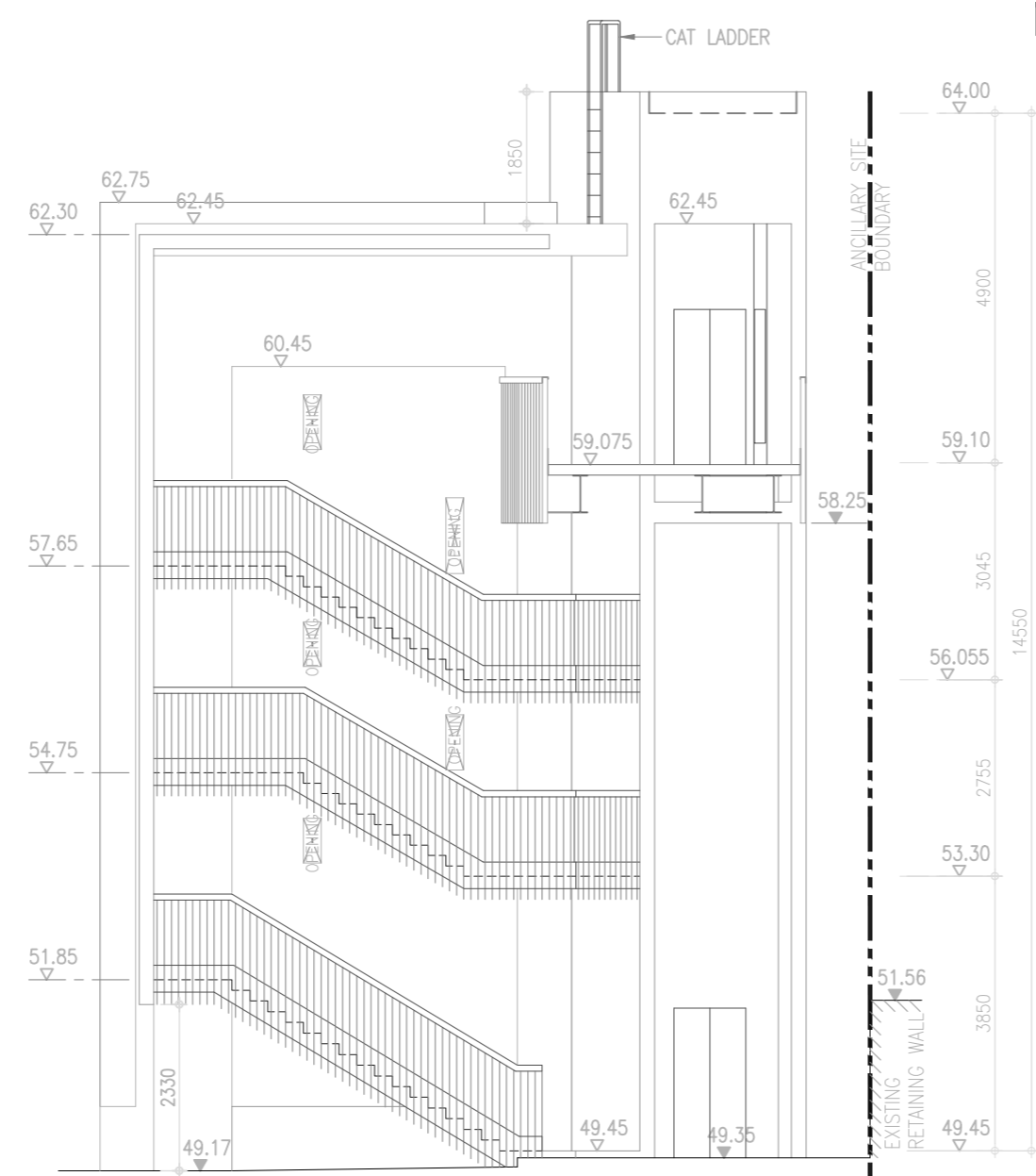
G ELEVATION



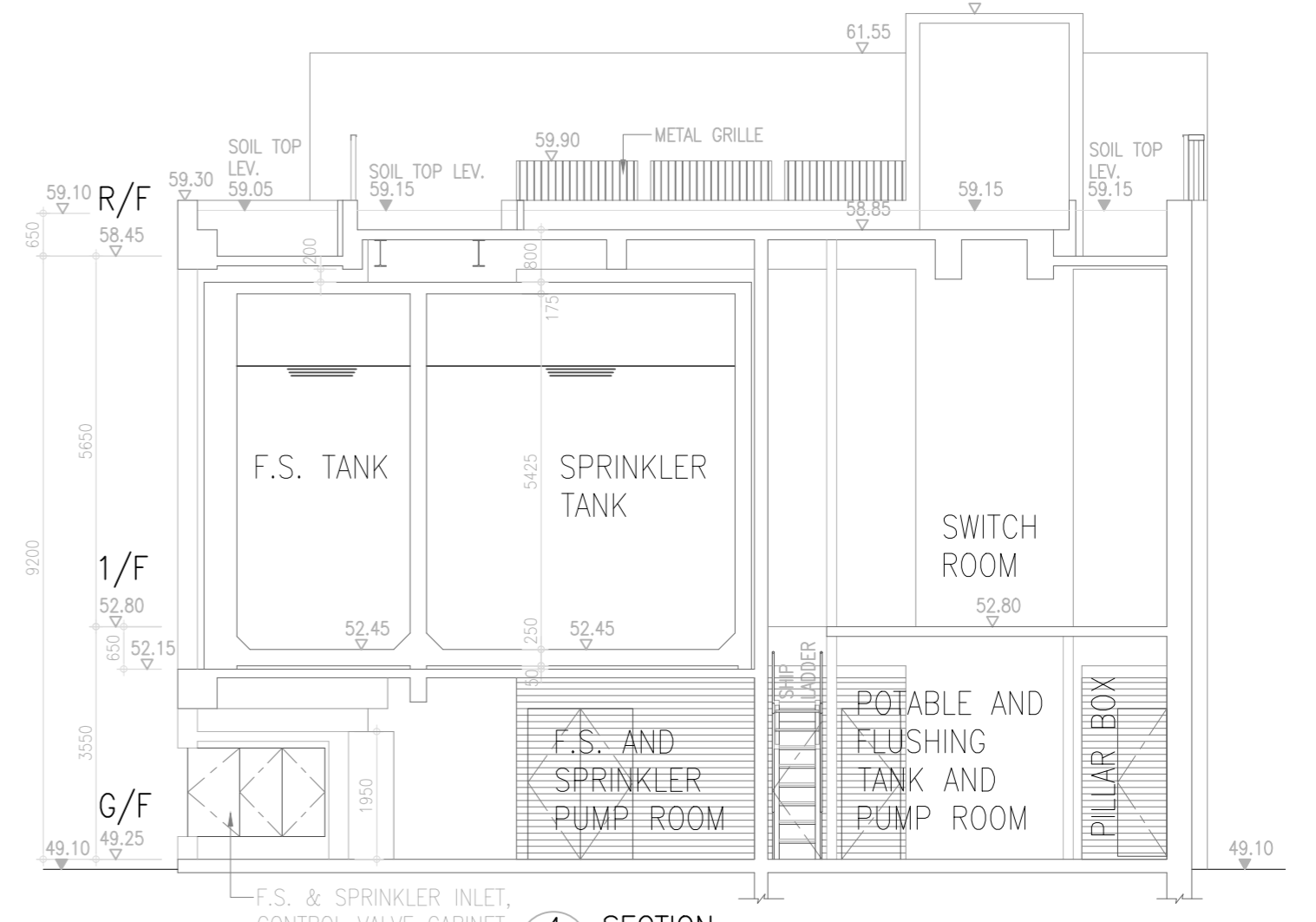
H ELEVATION



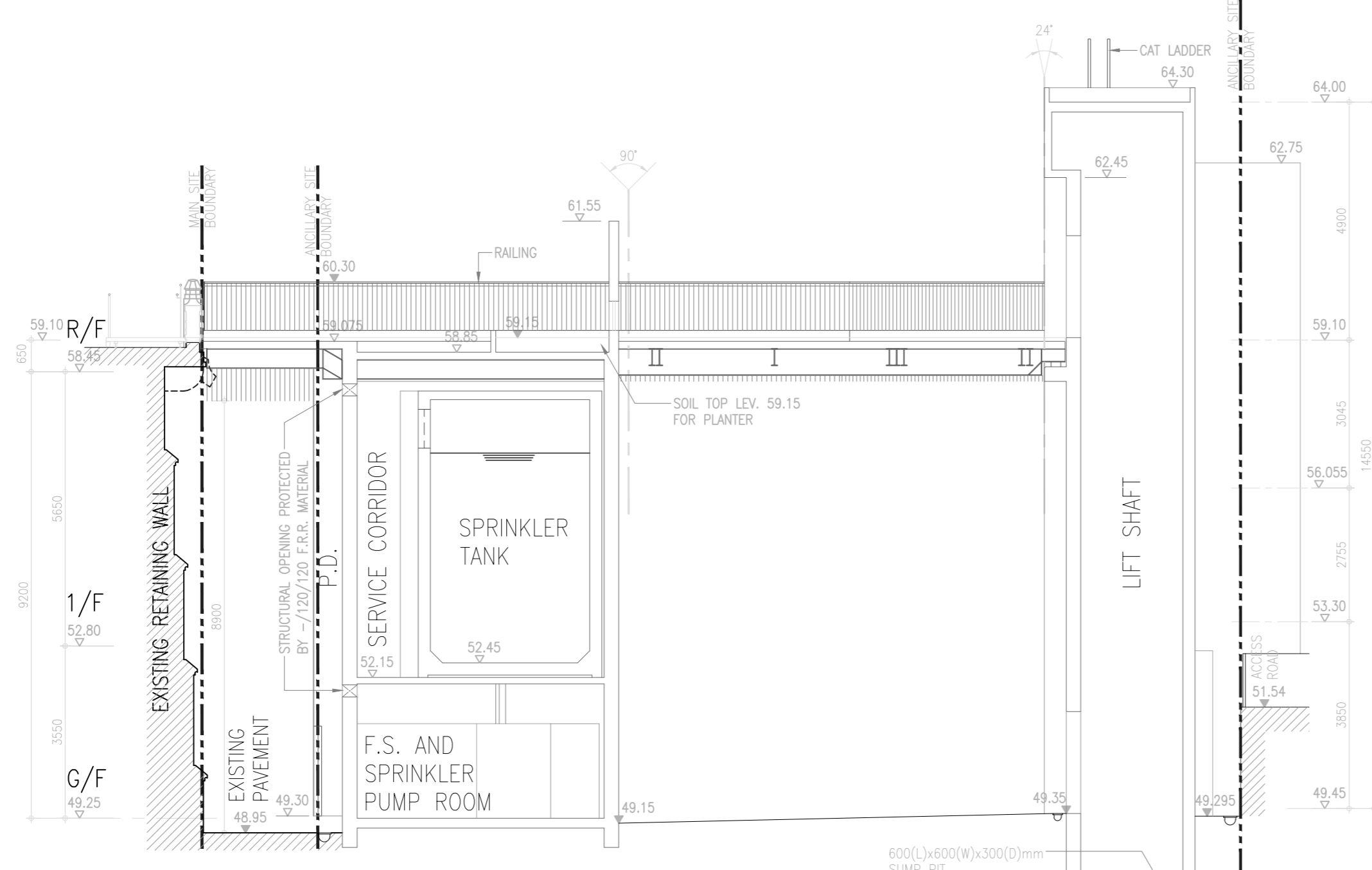
J ELEVATION



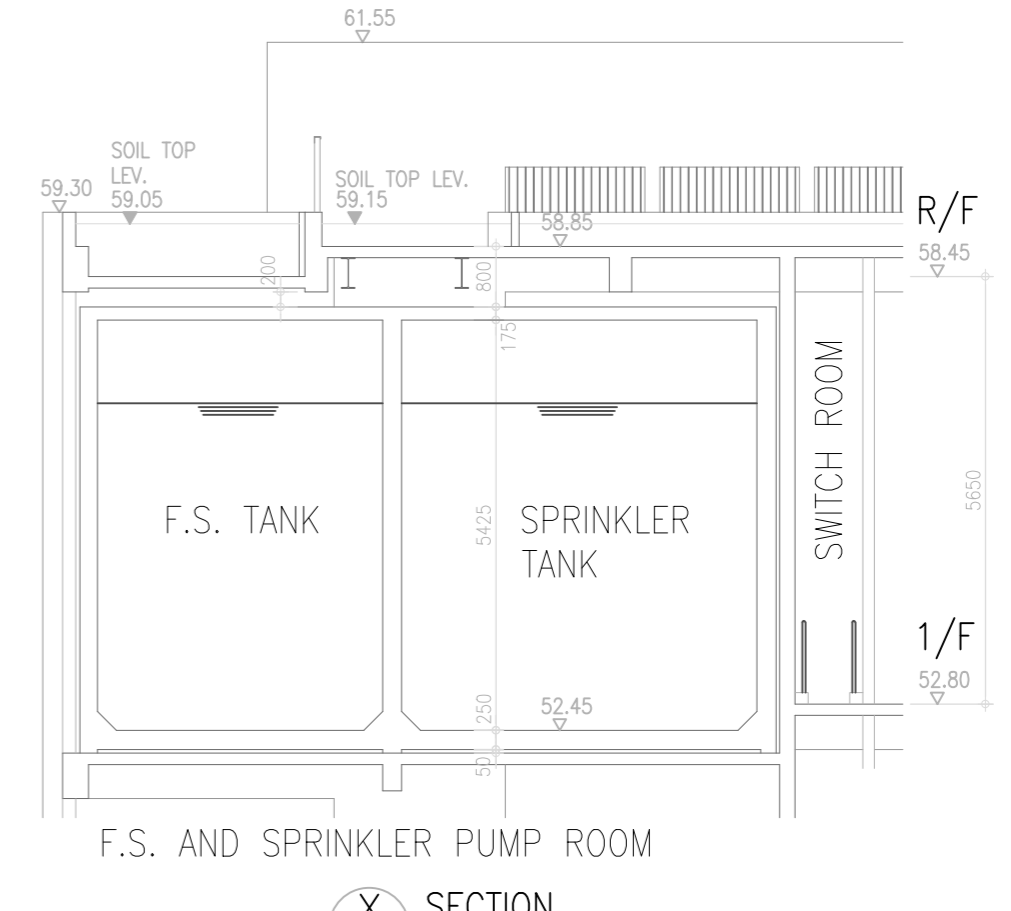
K ELEVATION



4 SECTION



3 SECTION



X SECTION

FOR REFERENCE ONLY

COORDINATES OF HAW PAR MANSION
SITE BOUNDARY

POINT	EAST	NORTH
S	838171.037	815196.610
T	838200.178	815163.670
AA	838195.985	815159.769
AB	838184.721	815161.657
AC	838179.944	815158.173
AD	838171.784	815152.243
AE	838167.754	815149.390
AF	838165.469	815149.412
AG	838163.215	815147.799
AH	838159.334	815153.305
AJ	838158.422	815152.666
AK	838156.219	815155.797
AL	838157.132	815156.435
AM	838153.224	815161.986
AN	838151.658	815163.128
AP	838146.823	815171.085
AQ	838142.568	815178.595
AR	838139.324	815182.601
AS	838135.960	815188.107
AT	838132.681	815186.579
AU	838129.756	815188.366
AV	838128.046	815191.519
AW	838128.413	815191.702
X	838129.349	815191.620
Y	838134.415	815193.883
Z	838131.882	815192.752
AX	838135.064	815194.717
AY	838135.335	815194.853
AZ	838134.901	815195.808
BA	838156.624	815205.830
BB	838157.800	815206.102
BC	838158.475	815205.940
BD	838159.159	815206.709
BE	838162.155	815206.071
BF	838162.468	815205.120
BG	838163.139	815204.984
BH	838163.935	815204.517
BJ	838167.079	815201.019
R	838169.184	815198.673

COORDINATES OF ANCILLARY SITE
SITE BOUNDARY

POINT	EAST	NORTH
V	838171.635	815235.161
A	838184.943	815228.174
B	838186.574	815223.826
C	838183.065	815217.486
D	838183.936	815211.165
E	838185.418	815209.405
F	838189.828	815207.221
G	838190.600	815206.811
H	838184.418	815194.424
J	838184.620	815194.347
K	838184.337	815193.773
L	838183.630	815194.165
M	838180.857	815194.680
N	838177.007	815194.506
P	838176.274	815194.886
Q	838170.903	815200.106
R	838169.184	815198.673
BJ	838167.079	815201.019
BK	838168.626	815202.312
BL	838166.878	815204.010
BM	838167.499	815204.647
BN	838168.515	815209.585
BP	838167.544	815215.315
BQ	838168.259	815219.580
BR	838170.147	815226.006
BS	838169.635	815227.053
U	838168.459	815227.542
W	838170.047	815231.352

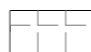
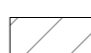


COORDINATES OF HAW PAR MANSION
SITE BOUNDARY

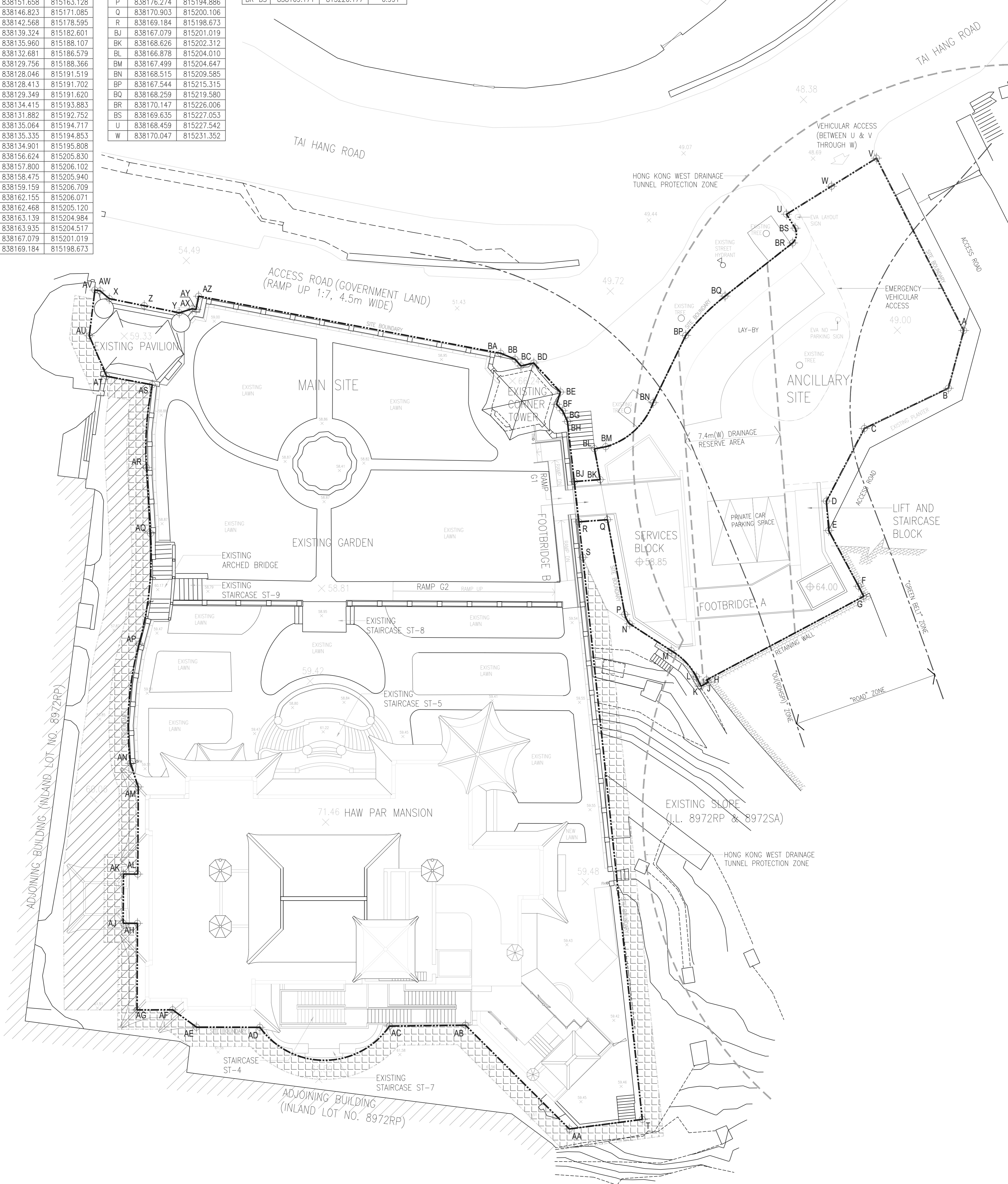
CENTRE POINT	EAST	NORTH	RADIUS(m)
AC-AD	838173.777	815158.080	6.168
AN-AP	838169.411	815179.363	24.057
AP-AQ	838122.095	815162.035	26.332
AR-AS	838158.131	815197.872	24.226

COORDINATES OF ANCILLARY SITE
SITE BOUNDARY

CENTRE POINT	EAST	NORTH	RADIUS(m)
L-M	838181.356	815189.645	5.060
N-P	838177.359	815196.082	1.615
BM-BN	838163.204	815208.104	5.514
BP-BQ	838186.031	815214.408	18.509
BR-BS	838169.171	815226.177	0.991

LEGEND:

-  UNOBSTRUCTED AREA (MEASURING 1.5m WIDE FROM SITE BOUNDARY) (INLAND LOT NO. 8972RP)
-  PASSAGE AREA (INLAND LOT NO. 8972RP)
-  AREA X (GOVERNMENT LAND)
-  SITE BOUNDARY



FOR REFERENCE ONLY

- GENERAL NOTES:
1. ALL DRAINAGE LAYOUT REFER TO DRAINAGE DRAWINGS.
 2. EACH SET OF TENSILE BARRIER SHALL COMPRISE OF 1 PAIR OF PROPRIETARY STANCHIONS, STAINLESS STEEL STAIN FINISH, WITH BUILT-IN NYLON STRAPS OF MIN. 2m LONG EACH.

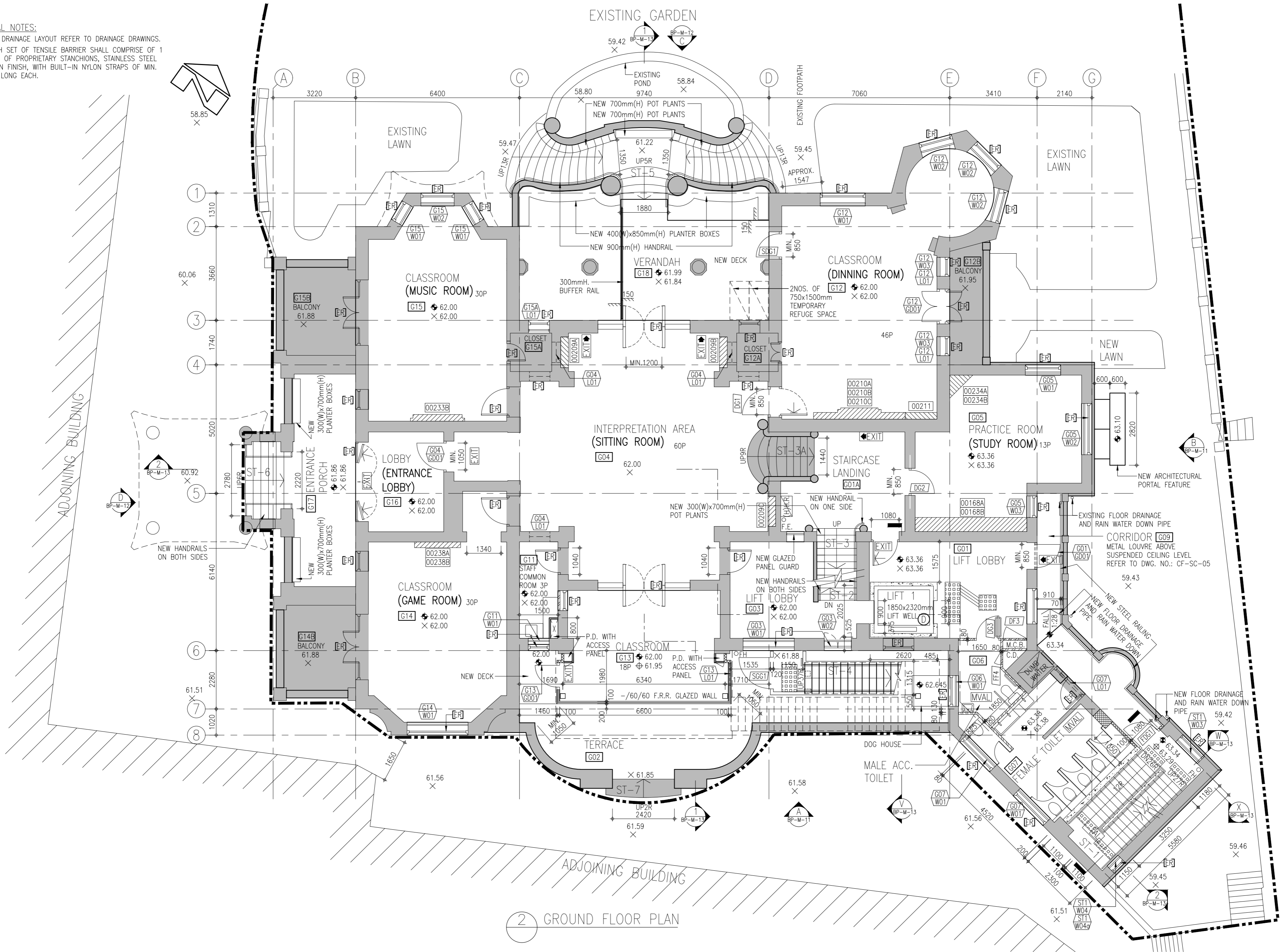


- LEGEND
- EXISTING BUILDING WORKS (NO ADDITION AND ALTERATION WORKS)
 - GYPSUM BLOCK WORKS
 - SOLID CONCRETE BLOCK WORKS WITH WATERPROOFING MATERIAL ON EXTERNAL BUILDING SURFACE
 - HOSE REEL
 - HOSE REEL AT HIGH LEVEL
 - FIREMAN'S LIFT SIGN
 - DIRECTIONAL SIGN
 - MECHANICAL VENTILATION AND ARTIFICIAL LIGHTING
 - ARTIFICIAL LIGHTING
 - 4.5kg CO₂ FIRE EXTINGUISHER
 - 1/60/60 F.R.R. INSPECTION PANEL
 - ROOM NUMBER
 - DOOR MARK
 - EXISTING FIXED FURNITURE MARK
 - EXISTING DOOR, WINDOW, GRILLE TO BE RETAINED
 - ROOM NUMBER
 - L: FOR LOUVRE MARK
 - W: FOR WINDOW MARK
 - EXISTING DOOR SHALL BE KEPT OPEN
 - 0.00 0.00 EXISTING LEVEL
 - 0.00 0.00 STRUCTURAL FLOOR LEVEL
 - 0.00 0.00 FINISHED FLOOR LEVEL

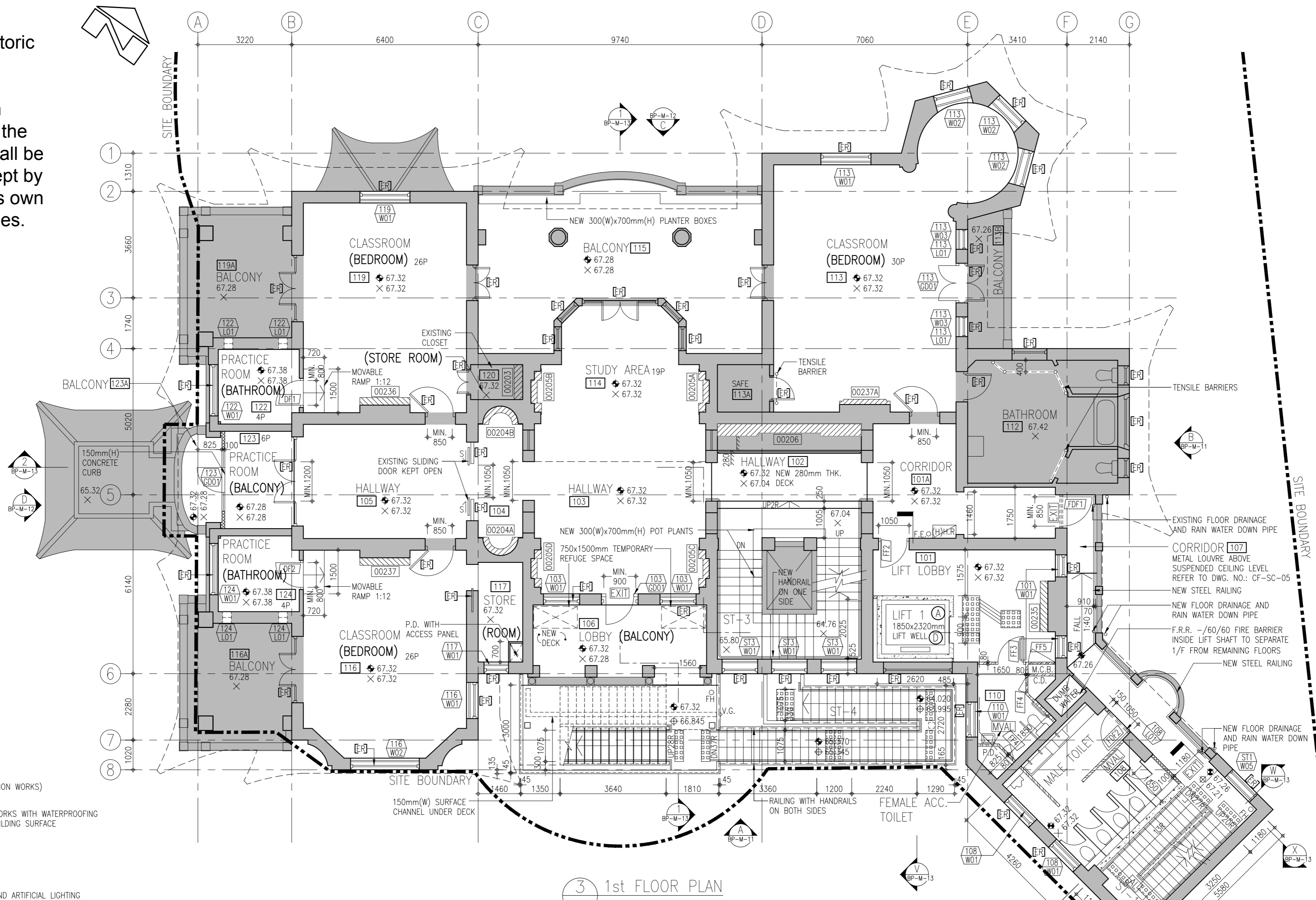
1 LOWER GROUND FLOOR PLAN

FOR REFERENCE ONLY

- GENERAL NOTES:
1. ALL DRAINAGE LAYOUT REFER TO DRAINAGE DRAWINGS.
 2. EACH SET OF TENSILE BARRIER SHALL COMPRISE OF 1 PAIR OF PROPRIETARY STANCHIONS, STAINLESS STEEL STAIN FINISH, WITH BUILT-IN NYLON STRAPS OF MIN. 2m LONG EACH.



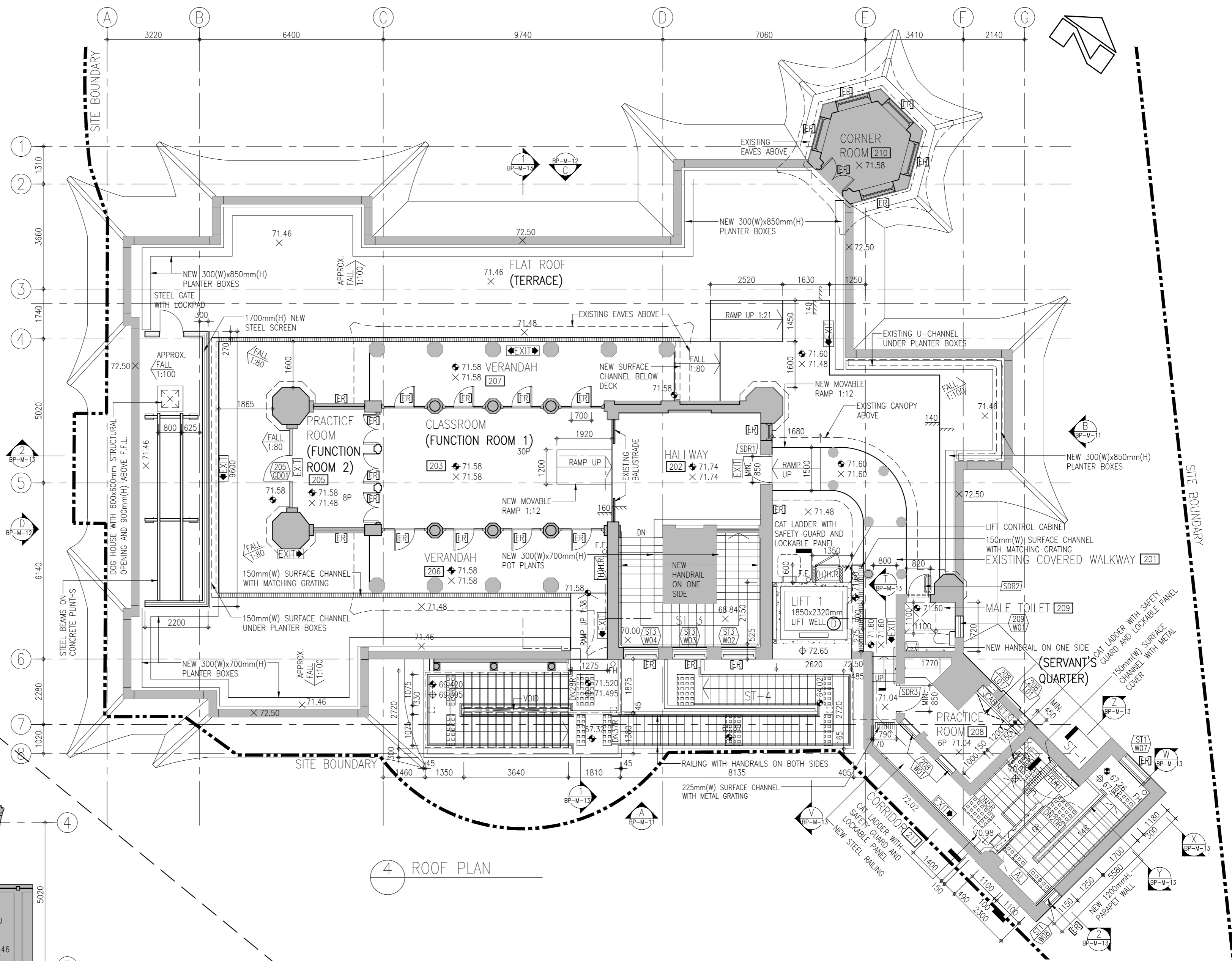
Note: Existing historic buildings that fall outside the site boundary form an integrated part of the Premises, and shall be conserved and kept by the Operator at its own costs and expenses.



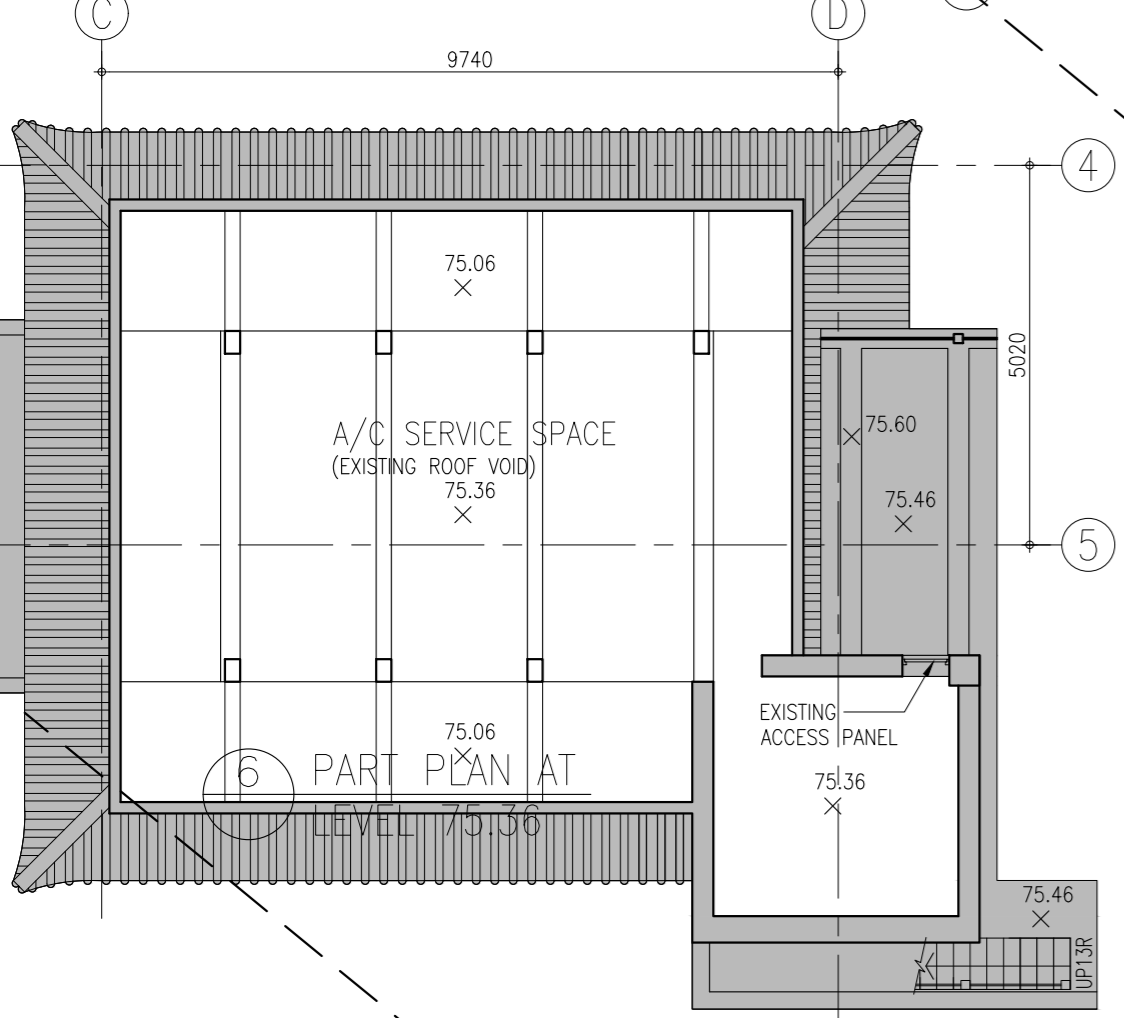
- LEGEND
- EXISTING BUILDING WORKS (NO ADDITION AND ALTERATION WORKS)
 - GYPSUM BLOCK WORKS
 - SOLID CONCRETE BLOCK WORKS WITH WATERPROOFING MATERIAL ON EXTERNAL BUILDING SURFACE
 - HOSE REEL
 - FIREMAN'S LIFT SIGN
 - DIRECTIONAL SIGN
 - MECHANICAL VENTILATION AND ARTIFICIAL LIGHTING
 - ARTIFICIAL LIGHTING
 - 4.5kg CO₂ FIRE EXTINGUISHER
 - /60/60 F.R.R. INSPECTION PANEL
 - ROOM NUMBER
 - DOOR MARK
 - EXISTING FIXED FURNITURE MARK
 - EXISTING DOOR, WINDOW, GRILLE TO BE RETAINED
 - ROOM NUMBER
 - L: FOR LOUVRE MARK
 - W: FOR WINDOW MARK
 - EXISTING DOOR SHALL BE KEPT OPEN
 - 0.00 0.00 EXISTING LEVEL
 - 0.00 0.00 STRUCTURAL FLOOR LEVEL
 - 0.00 0.00 FINISHED FLOOR LEVEL

FOR REFERENCE ONLY

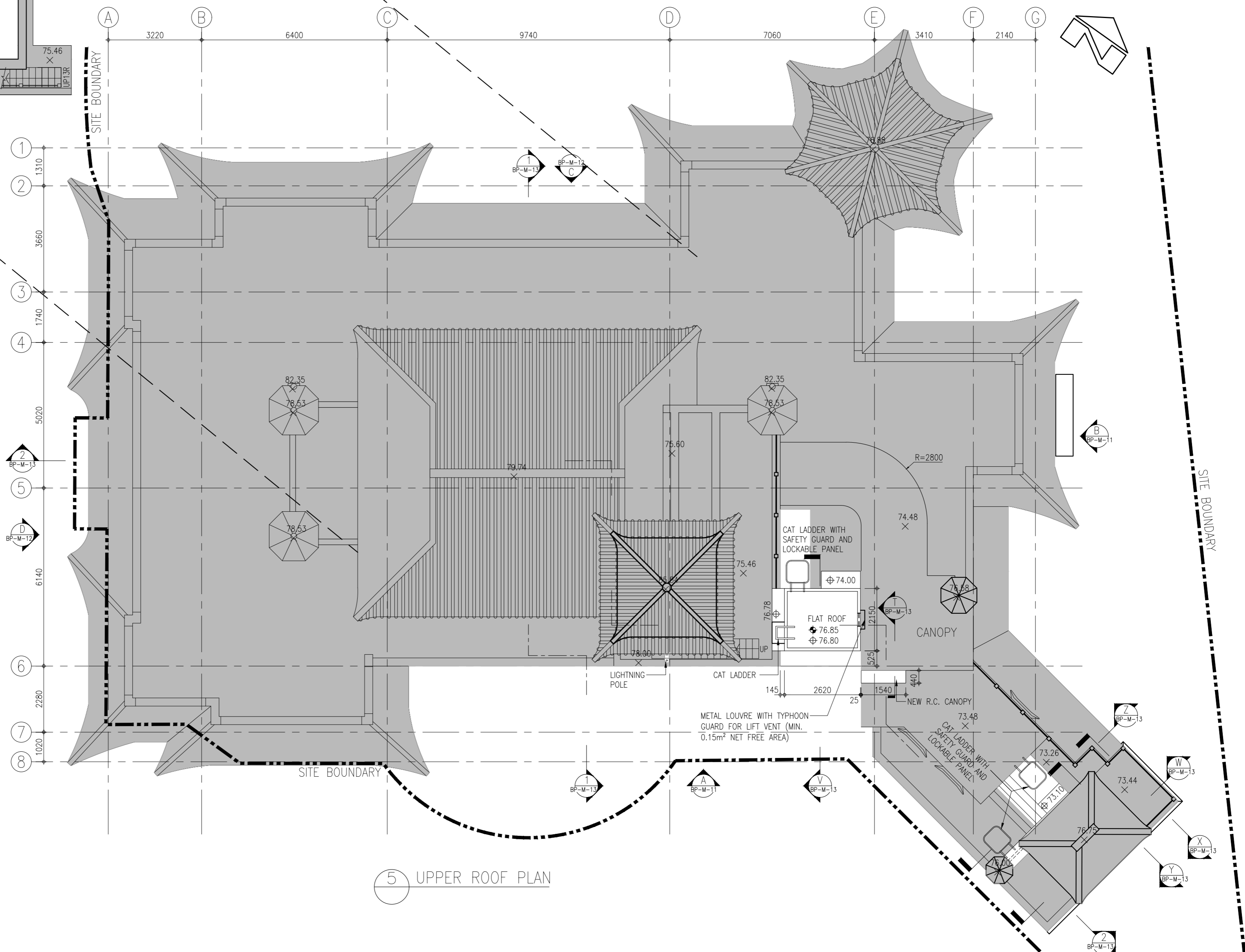
GENERAL NOTES:
 1. ALL DRAINAGE LAYOUT REFER TO DRAINAGE DRAWINGS.
 2. EACH SET OF TENSILE BARRIER SHALL COMPRISE OF 1 PAIR OF PROPRIETARY STANCHIONS, STAINLESS STEEL STAIN FINISH, WITH BUILT-IN NYLON STRAPS OF MIN. 2m LONG EACH.



4 ROOF PLAN



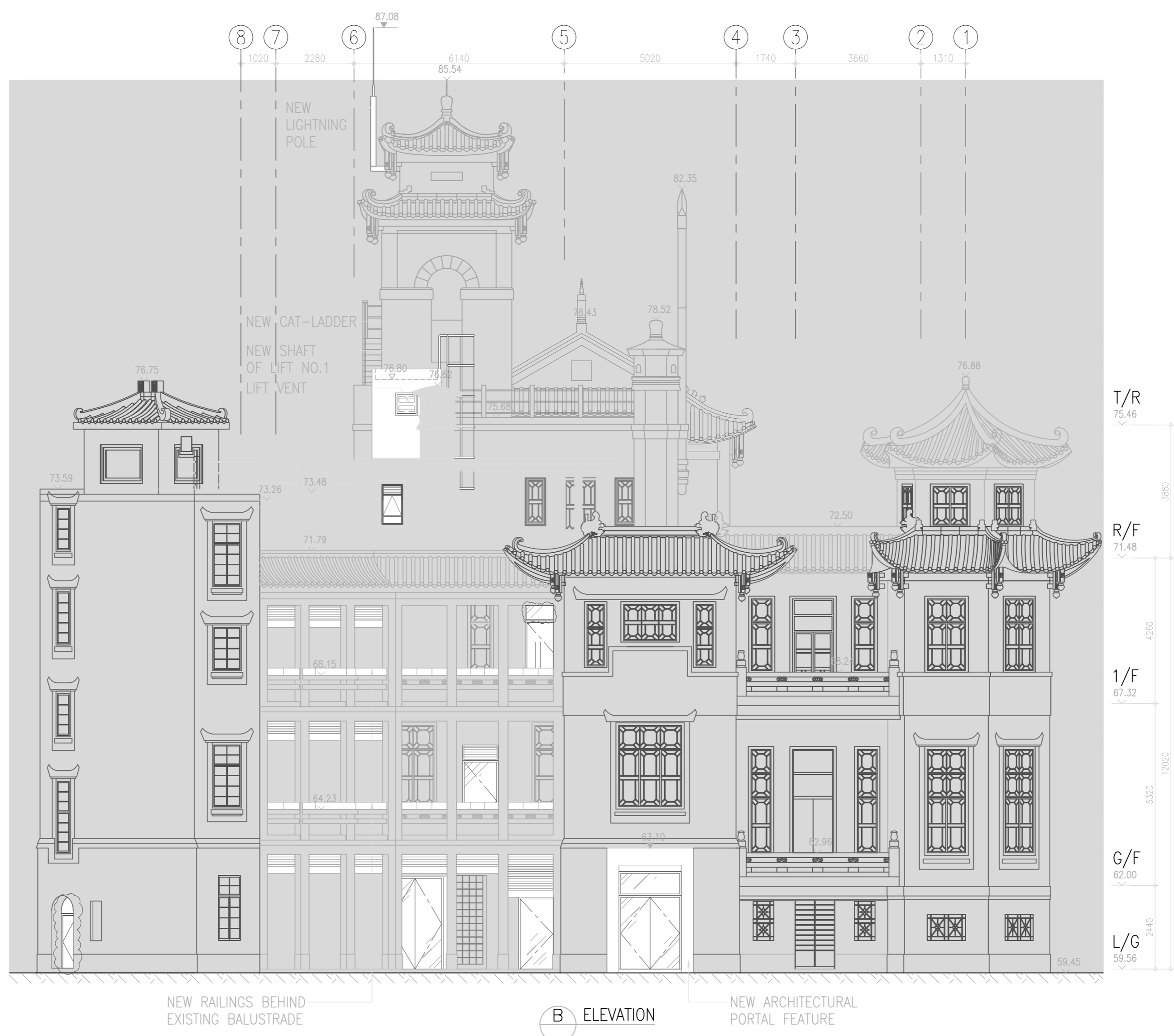
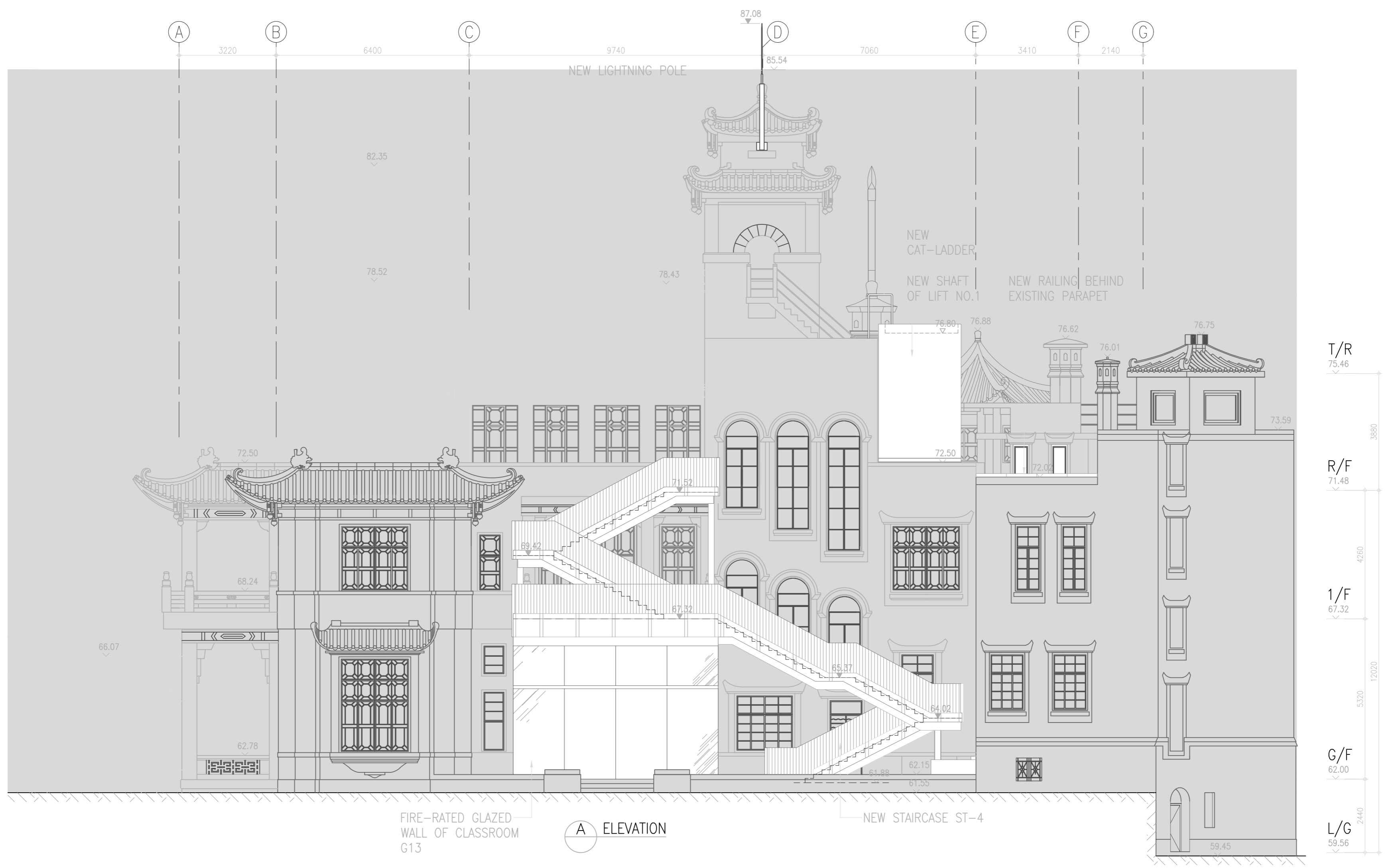
Note: Existing historic buildings that fall outside the site boundary form an integrated part of the Premises, and shall be conserved and kept by the Operator at its own costs and expenses.



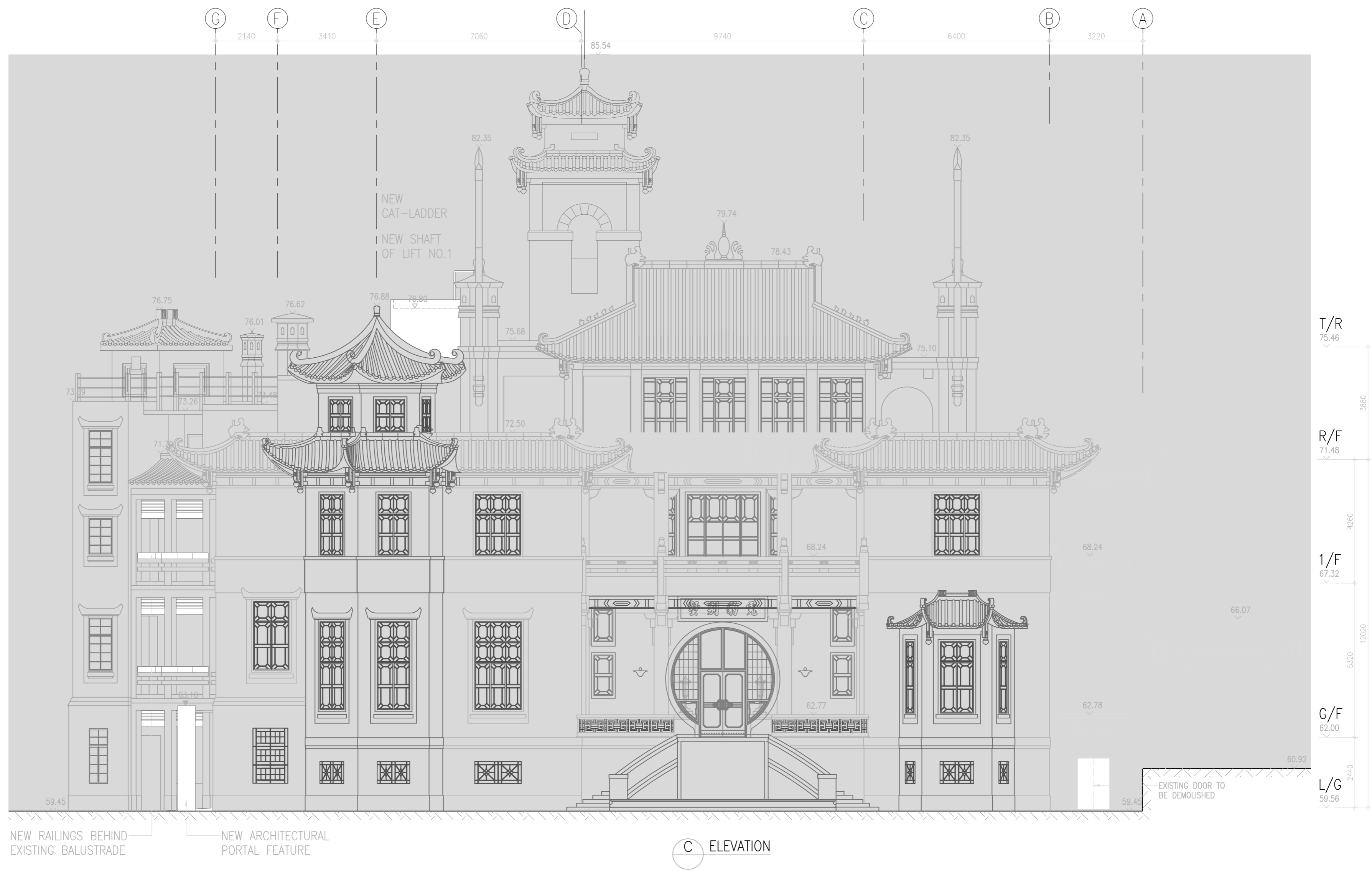
5 UPPER ROOF PLAN

- LEGEND
- EXISTING BUILDING WORKS (NO ADDITION AND ALTERATION WORKS)
 - GYPSUM BLOCK WORKS
 - SOLID CONCRETE BLOCK WORKS WITH WATERPROOFING MATERIAL ON EXTERNAL BUILDING SURFACE
 - HOSE REEL
 - HOSE REEL AT HIGH LEVEL
 - FIREMAN'S LIFT SIGN
 - DIRECTIONAL SIGN
 - MECHANICAL VENTILATION AND ARTIFICIAL LIGHTING
 - ARTIFICIAL LIGHTING
 - 4.5kg CO2 FIRE EXTINGUISHER
 - /60/60 F.R.R. INSPECTION PANEL
 - ROOM NUMBER
 - DOOR MARK
 - EXISTING FIXED FURNITURE MARK
 - EXISTING DOOR, WINDOW, GRILLE TO BE RETAINED
 - ROOM NUMBER
 - L: FOR LOUVER MARK
 - W: FOR WINDOW MARK
 - EXISTING DOOR SHALL BE KEEP OPEN
 - 0.00 0.00 EXISTING LEVEL
 - 0.00 0.00 STRUCTURAL FLOOR LEVEL
 - 0.00 0.00 FINISHED FLOOR LEVEL

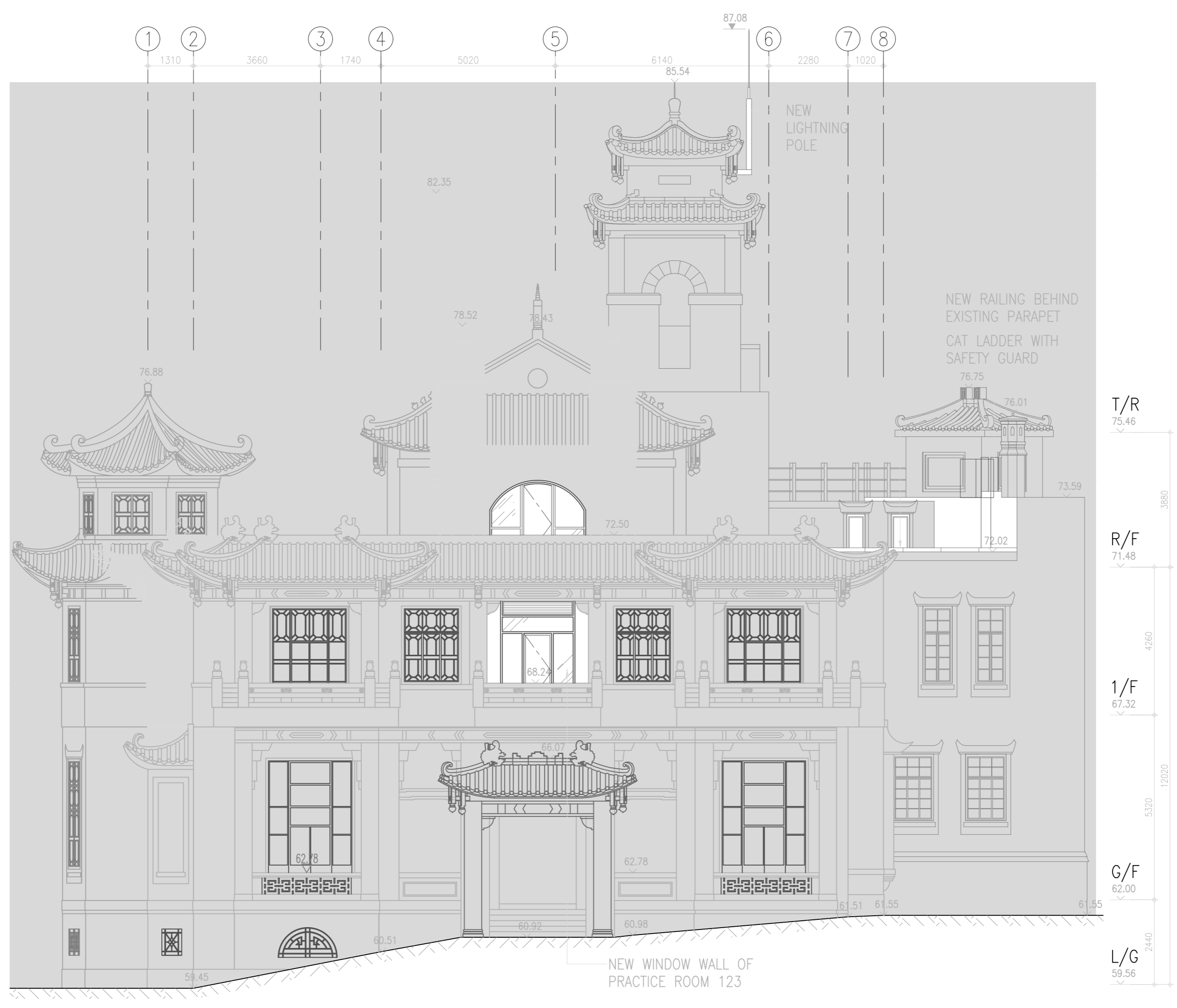
FOR REFERENCE ONLY



FOR REFERENCE ONLY

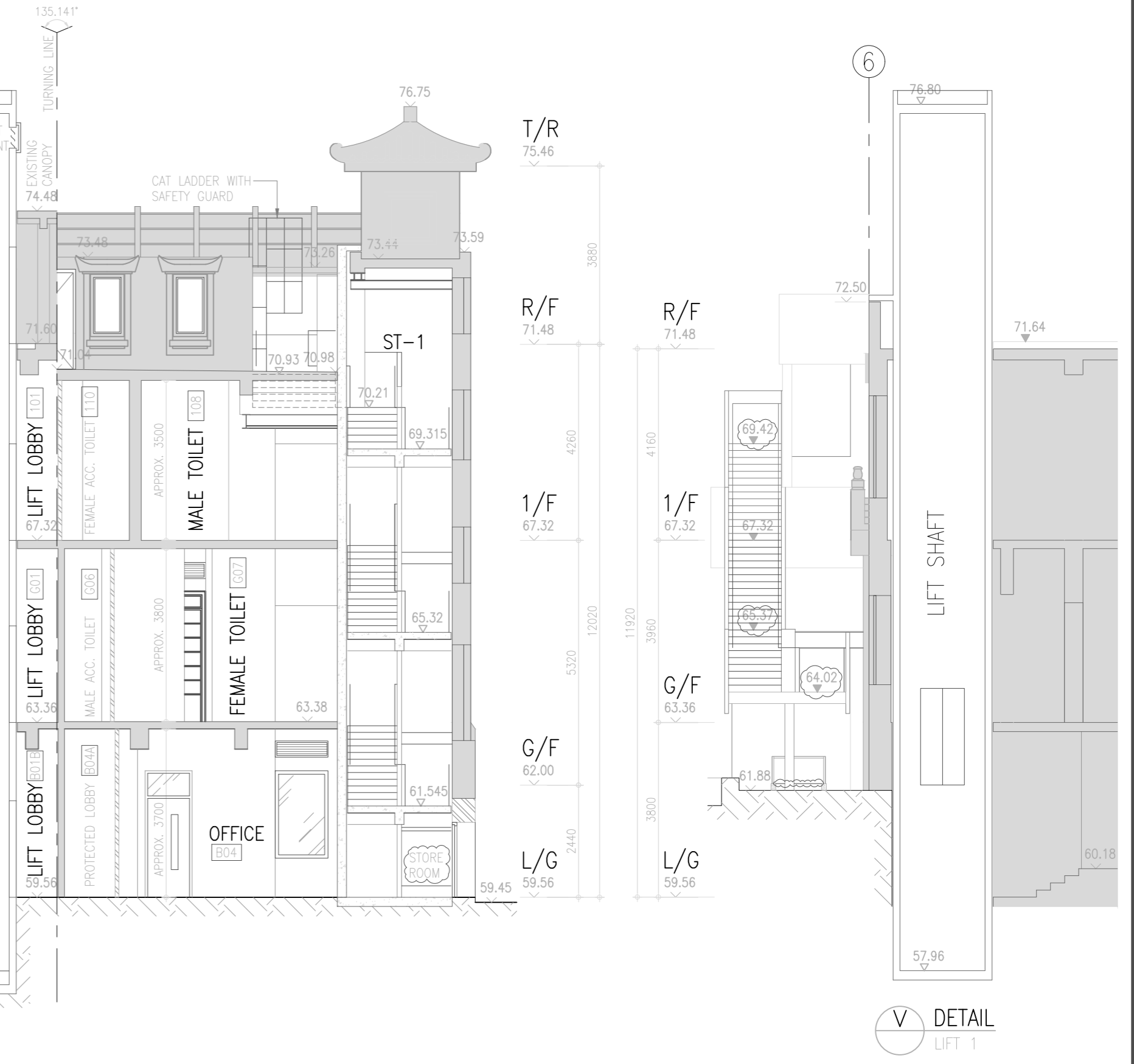
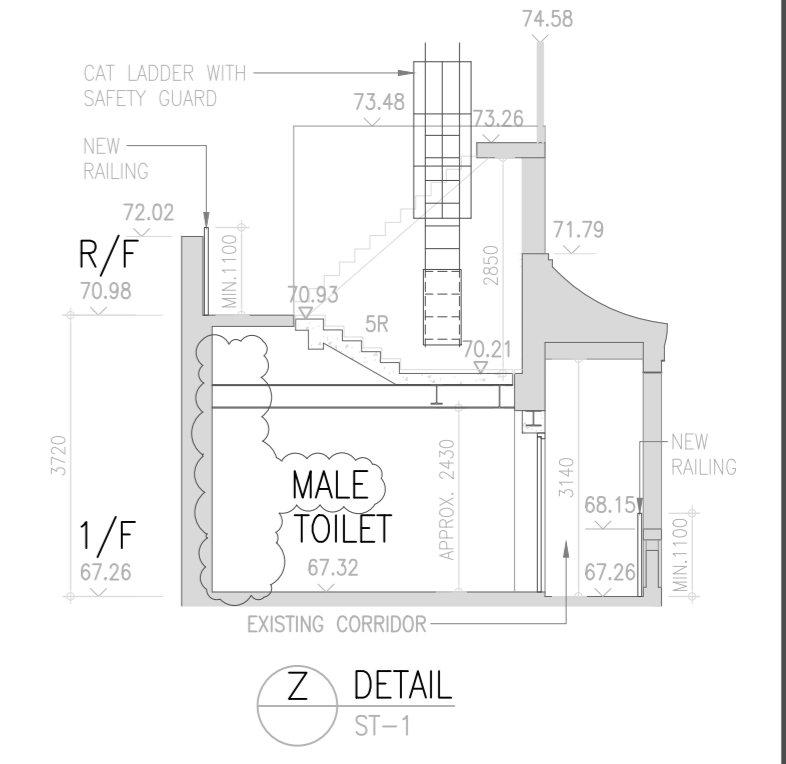
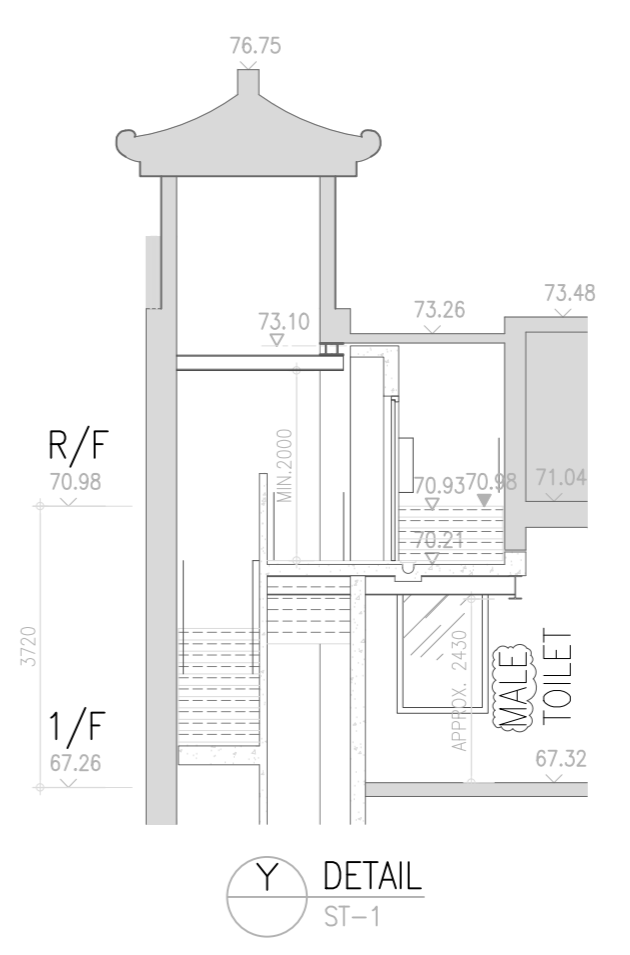
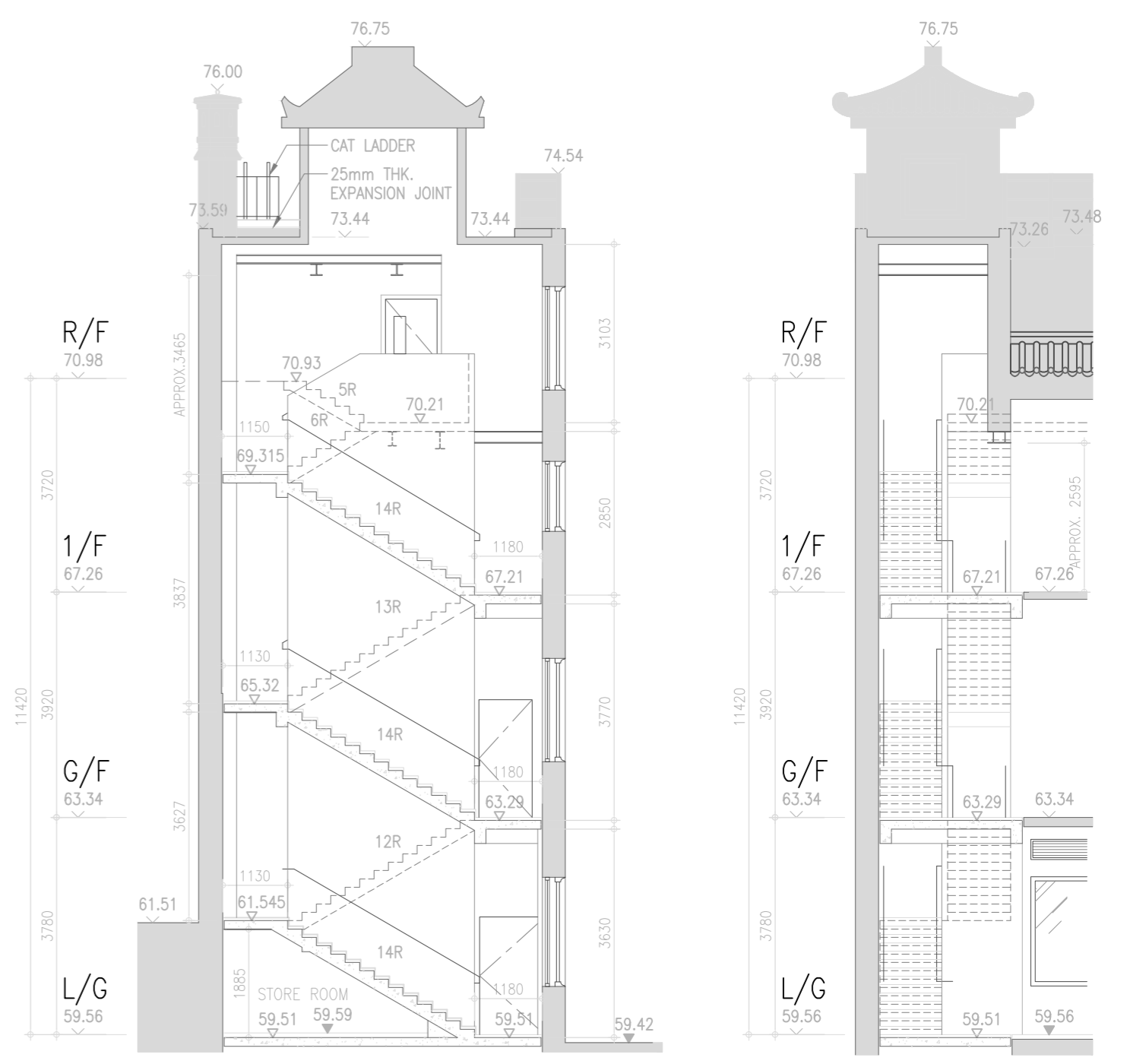
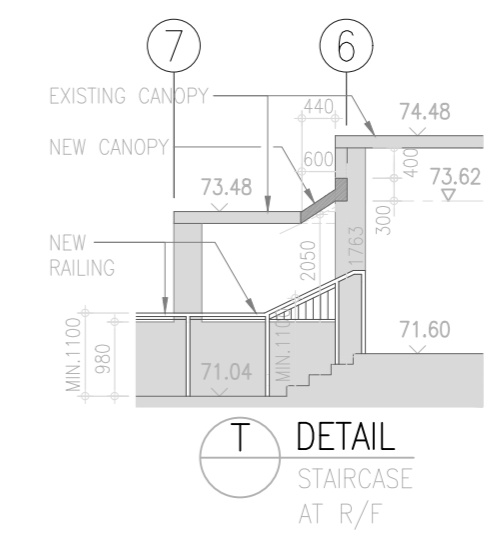
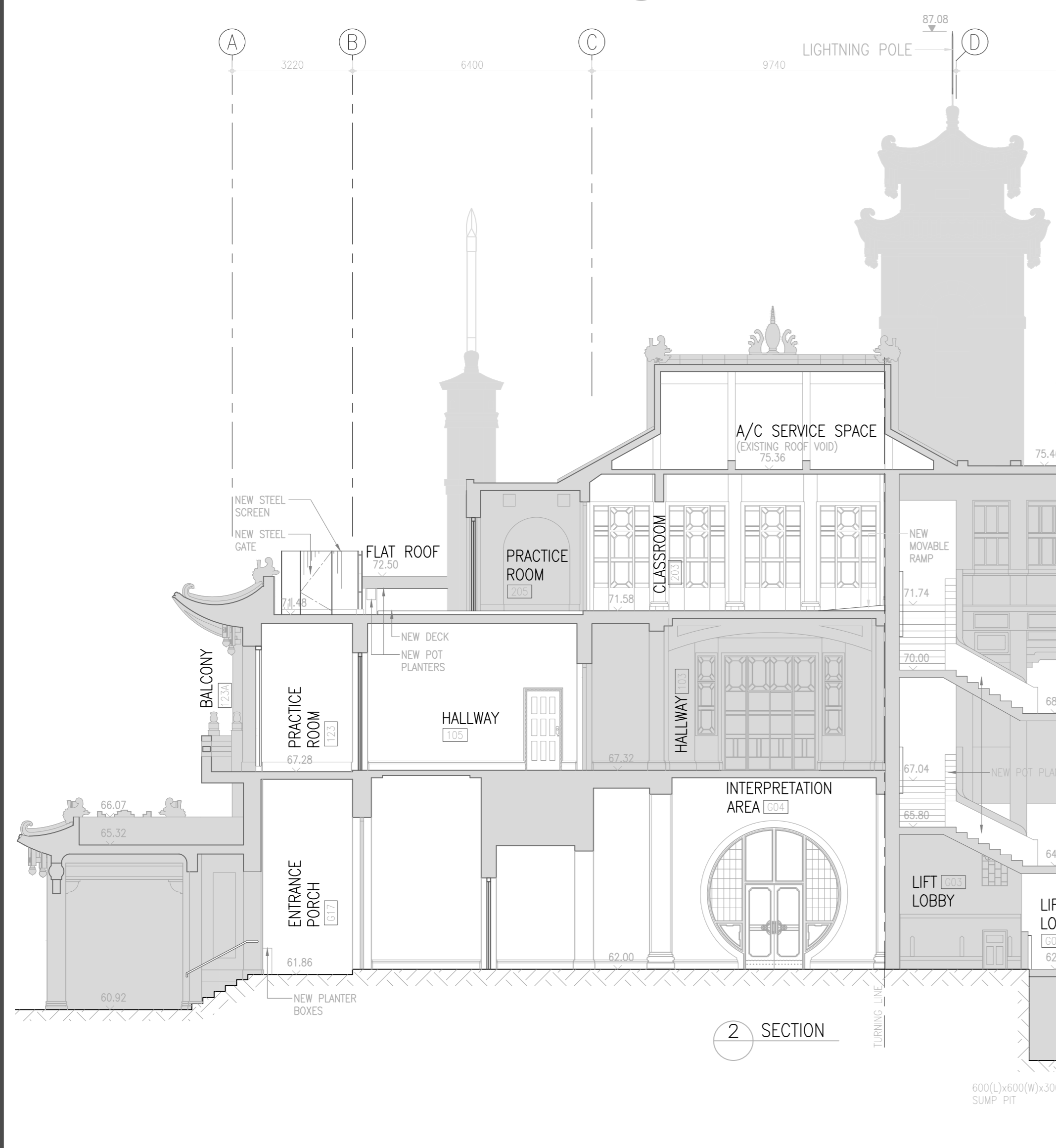
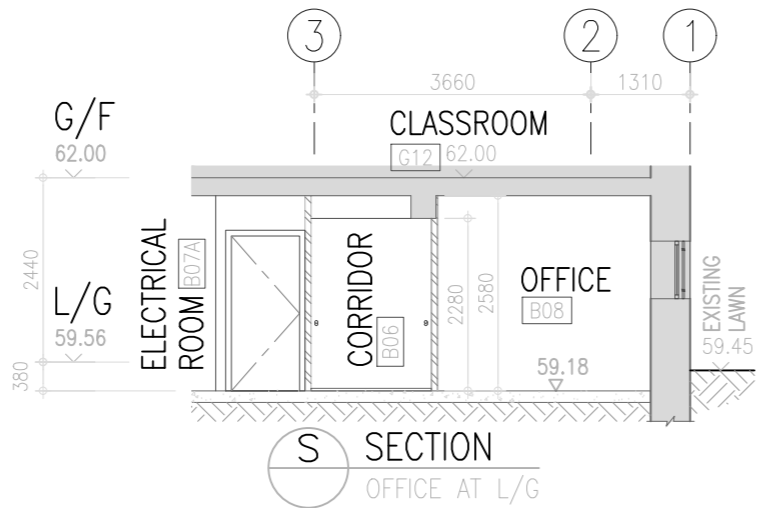


C ELEVATION



D ELEVATION

FOR REFERENCE ONLY



FOR REFERENCE ONLY